

REFERENCE PLAN OF COVENANT OF PARTS OF:  
LOT 'A', PLAN BCP \_\_\_\_\_ ; AND PART OF THE COMMON PROPERTY  
OF STRATA PLAN BCS \_\_\_\_\_ ; BOTH OF BLOCK 'K',  
DISTRICT LOT 230, GROUP ONE, NEW WESTMINSTER DISTRICT

PLAN BCP \_\_\_\_\_  
DEPOSITED IN THE LAND TITLE OFFICE AT  
NEW WESTMINSTER, B.C., THIS \_\_\_\_\_ DAY OF \_\_\_\_\_  
20 \_\_\_\_\_

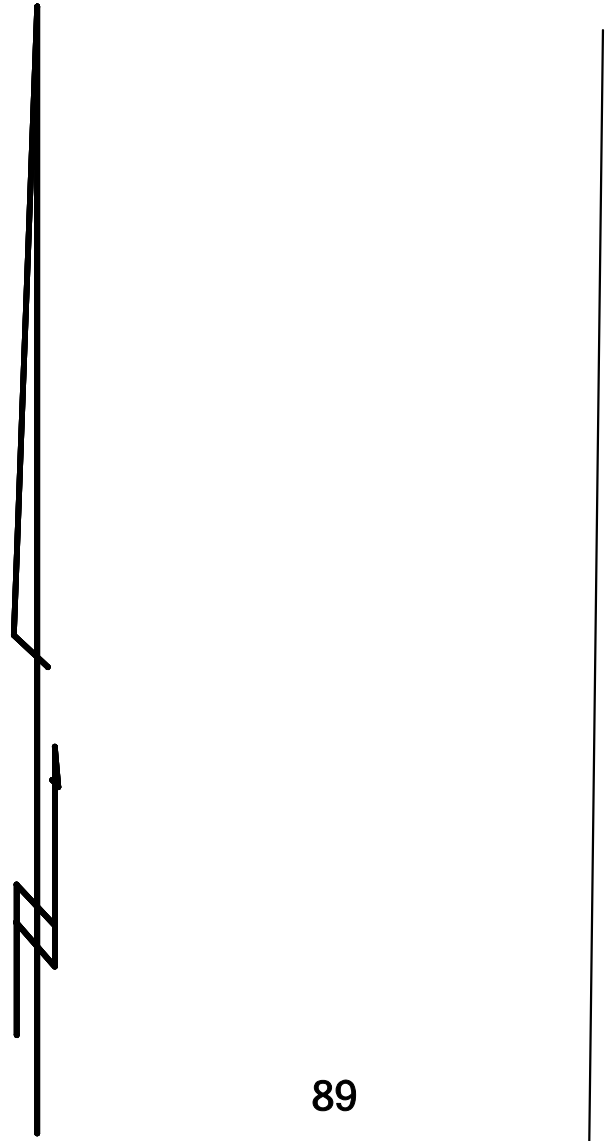
PURSUANT TO SECTION 219 OF THE LAND TITLE ACT  
BCGS 92G036

REGISTRAR



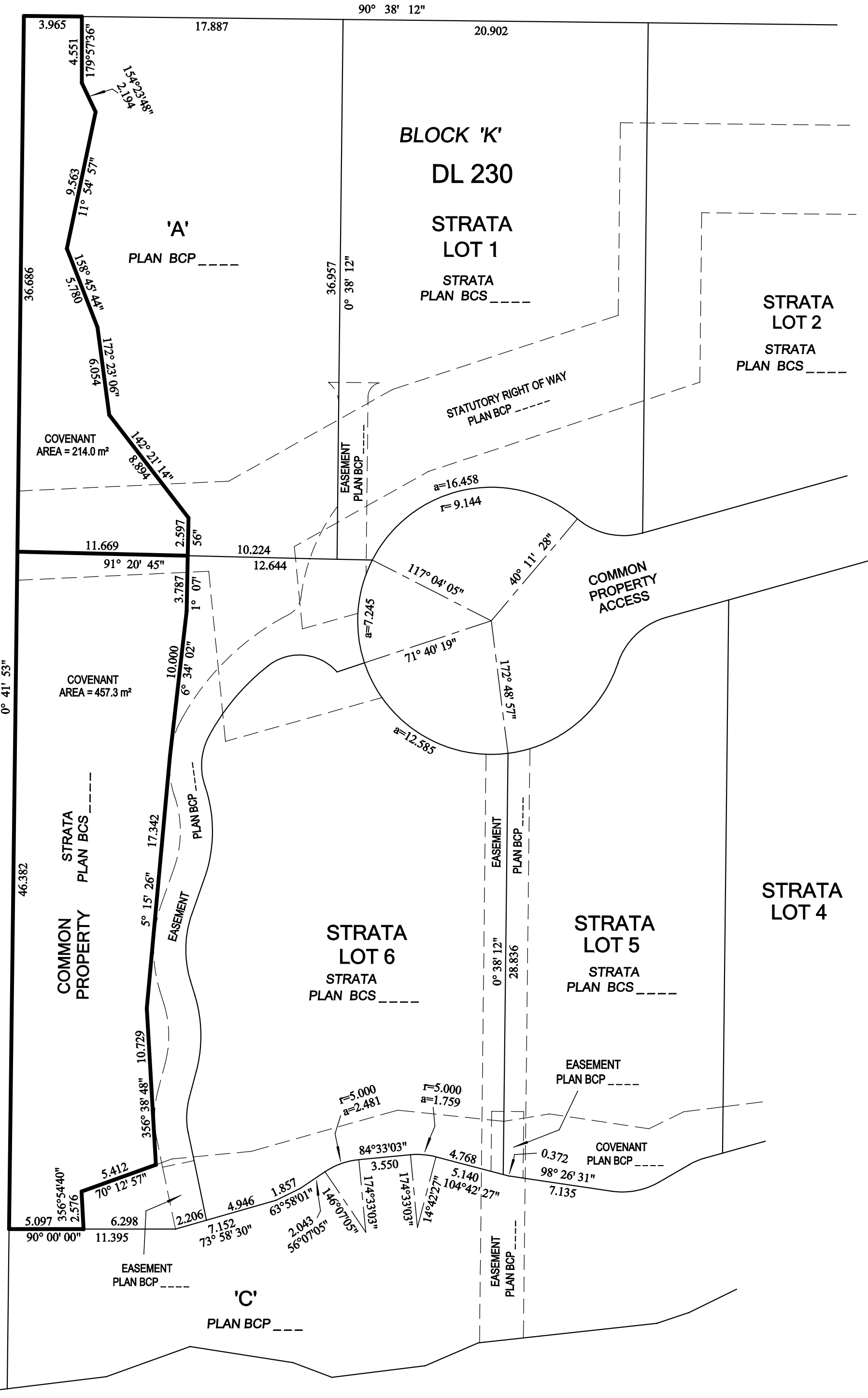
THE INTENDED PLOT SIZE OF THIS PLAN IS  
432 mm IN WIDTH BY 560 mm IN HEIGHT (C SIZE)  
WHEN PLOTTED AT A SCALE OF 1: 250  
ALL DISTANCES ARE IN METRES OR DECIMALS THEREOF  
UNLESS OTHERWISE NOTED

DOLLARTON HIGHWAY



89  
PLAN LMP9835  
  
BURRARD INDIAN  
RESERVE No.3

ROAD



LEGEND

- INTEGRATED SURVEY AREA No. 16  
DISTRICT OF NORTH VANCOUVER (NAD 83)(CSRS)  
GRID BEARINGS ARE DERIVED FROM PLAN BCP \_\_\_\_\_
- THIS PLAN SHOWS HORIZONTAL GROUND-LEVEL DISTANCES,  
EXCEPT WHERE OTHERWISE NOTED
- TO COMPUTE GRID DISTANCES, MULTIPLY GROUND-LEVEL  
DISTANCES BY COMBINED FACTOR 0.9995947
- DENOTES CONTROL MONUMENT FOUND
- DENOTES STANDARD IRON POST FOUND
- DENOTES STANDARD IRON POST PLACED
- DENOTES LEAD PLUG FOUND
- DENOTES LEAD PLUG PLACED
- Wt DENOTES WITNESS

NOTE  
THIS PLAN SHOWS ONE OR MORE WITNESS POSTS WHICH  
ARE NOT SET ON THE TRUE CORNER(S).

BURRARD INLET

I, A.K. WINTER, A BRITISH COLUMBIA LAND SURVEYOR, CERTIFY THAT  
I WAS PRESENT AT AND PERSONALLY SUPERINTENDED THE SURVEY  
REPRESENTED BY THIS PLAN, AND THAT THE SURVEY AND PLAN ARE CORRECT  
THE FIELD SURVEY WAS COMPLETED ON THE \_\_\_\_\_ TH DAY OF \_\_\_\_\_, 2011  
THE PLAN WAS COMPLETED AND CHECKED, AND THE CHECKLIST FILED  
UNDER #xxxxxx, ON THE \_\_\_\_\_ TH DAY OF \_\_\_\_\_, 2011

THIS PLAN LIES WITHIN THE  
GREATER VANCOUVER REGIONAL DISTRICT

B.C.L.S.

3707-3739 DOLLARTON HIGHWAY  
FB. p. - M 3044-11 NVD

HOBBS, WINTER & MacDONALD,  
B.C. LAND SURVEYORS,  
113-828 HARBOURSIDE DRIVE,  
NORTH VANCOUVER, B.C.. V7P 3R9  
TEL 604-986-1371 FAX 604-986-5204  
EMAIL: admin@hwmsurveys.com